

VersionOne Connector for Confluence

Plugin Integration for Tools

Contribyte 2019

Lasse.Mikkonen@contribyte.fi



Information from Engineering to Stakeholders

Problem and Solution

- Engineering tools are considered hard to use by non-technical people
- Document based Status Reports are laborious to create and keep up-to-date

- Automated information flow **reduces manual work**
- Using Development Data is **easy for stakeholders** like Sales, Marketing, Product Support



VALUE PROPOSITION

VISIBILITY

- Provides development status to stakeholders - less uncertainty

SIMPLE

- Easy to use and combine information – saves time and effort

COLLABORATION

- Breaks down organization silos

Simple
User Interface
big effect

Confluence Spaces People Create

Windmill Demo

Pages

Blog

SPACE SHORTCUTS

- Product Windmill Elevator require...
- V1 admin

PAGE TREE


- Product Windmill Elevator require...
- Portfolio Product Windmill require...
- Status Page of Project SpotLight
- Real Demo page for macro
- Demo page for macro
- Epics from VersionOne**
- Simple Instructions
- Demo Aris

Pages / Demo HomeBase

Edit Save for later Watching Share

Epics from VersionOne

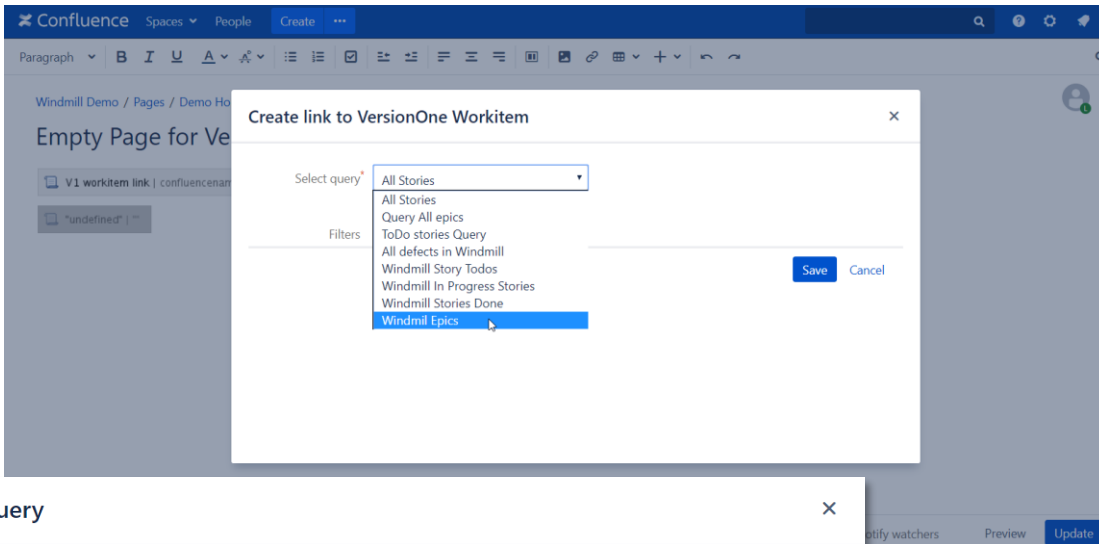
Created by Lasse Mikkonen, last modified about 16 hours ago



Name	Project	Status	Owner	Swag
Rotor	Windmill	Breakdown		100
Wings	Windmill			50
Hub	Windmill			20
Electronic System	Windmill	Deploy		50
Power Optimatation	Windmill	Test		20
Circuit design	Windmill	Deploy	Administrator	4
Proto Mother Board	Windmill	Test	Administrator	8
Low wind setup for mid wings	Windmill	Build		30
Simple Base	Windmill	Test	Administrator	100
Base Manufacturing Plan	Windmill	Breakdown	Administrator	

Like Be the first to like this

No labels



Edit query

Query Name*
Queries are listed by this name in the user macro.

Query Description*
Description for users.

VersionOne JSON*
Query

```
{  
  "from": "PrimaryWorkitem",  
  "select": ["Name", "Description", "Scope.Name",  
    "Status.Name", "SuperAndUp.Name"],  
  "filter": ["SuperAndUp.ID='$EpicID'"]  
}
```

[See VersionOne API](#)
[Show highlight](#)

Fields	Field Name	Field Display Name	Table width	Display Type
	Name	<input type="text" value="Name"/>	<input type="text"/>	General ▾
	Description	<input type="text" value="Description"/>	<input type="text"/>	HTML ▾
	Scope.Name	<input type="text" value="Project"/>	<input type="text"/>	General ▾

Easy Administration for VersionOne people

Contribbyte VersionOne Connector for Confluence

Installed as Confluence Plugin

- no changes to VersionOne

Uses VersionOne standard Rest API

- Access Token Authentication

Setup

- Query setup with VersionOne JSON notation
- End Users need just Confluence Macro knowledge

Best of both worlds

VersionOne

Development

Portfolio Management
The Agile Backlog Tool
Team & Project Work

Confluence

Stakeholders

Information Sharing
Project Documentation
Content Collaboration

Example: Live Epic / Story Listing

Pages / Demo HomeBase

Product Windmill Elevator requirements

Created by Lasse Mikkonen, last modified on Oct 18, 2018

Title	Designer	Developers	Document owner	Document status	Epic
Portfolio New Simple Base	@ Lasse Mikkonen	@ Pasi Pekkanen	@ Lasse Mikkonen	WAIT	E-01093 Simple Base DEPLOY
Portfolio New door colors	@ Lasse Mikkonen	@ Pasi Pekkanen	@ Lasse Mikkonen	WAIT	E-01080 New doors colors BUILD
Portfolio Low speed entry	@ Pasi Pekkanen		@ Lasse Mikkonen	DRAFT	E-01057 Test Epic 1 DEFINE
Portfolio Elevator max speed	@ Pasi Pekkanen		@ Lasse Mikkonen	UNDERWORK	E-01024 Third epic DEPLOY
Portfolio Elevator acceleration	@ Karo Salminen	@ Kerkko Pelttari	@ Lasse Mikkonen	DRAFT	E-01025 Elevator Acceleration

Like Be the first to like this

PORTFOLIO ITEM E-01093

Simple Base

Details History Dashboard

Links | 1 Attachments | 0

PROJECT	TYPE	STATUS
Windmill	Epic	Deploy
PORTFOLIO ITEM	OWNERS	DATE COMPLETED
-	Administrator	-
STRATEGIC THEMES	TARGET TEAM	PROGRESS
Ethical Energy	SW	<div style="width: 50%;"></div>
ESTIMATE PTS.	BUSINESS VALUE (0-100)	COST OF DELAY
-	20.00	63.00
RISK SCALE (0-10)	TIME CRITICALITY (0-100)	SWAG
9.00	30.00	100.00
CODE COMPLEXITY RANK (0-100);	RISK REDUCTION (0-100)	WSJF
-	13.00	0.63

Example: Project Status Page with combined content

The screenshot shows a Confluence page titled "Status Page of Project Spotlight" within a "Windmill Demo" space. The page is structured as follows:

- Header:** Confluence navigation bar with "Spaces", "People", "Create", and "Pages / Demo HomeBase".
- Left Sidebar:**
 - Pages: Blog
 - SPACE SHORTCUTS: Product Windmill Elevator require...
 - PAGE TREE:
 - Product Windmill Elevator require...
 - Portfolio Product Windmill require...
 - Status Page of Project Spotlight**
 - Real Demo page for macro
 - Demo page for macro
 - Epics from VersionOne
- Main Content Area:**
 - Status Page of Project Spotlight:** Created by Lasse Mikkonen, last modified just a moment ago.
 - Project Highlights:**

	Status
Timeline	ON TIME
Budget	LIGHT RISK
Main Delivery Items	<ul style="list-style-type: none"> E-01093 Simple Base DEPLOY E-01080 New doors colors BUILD E-01092 Low wind setup for mid wings BUILD
 - Project Lead:** Lasse Mikkonen (lasse.mikkonen@contribute.fi)
 - Project Live Status as Users Stories:**
 - Todo Items:**

Name	Owners.Name
Low wind setup for mid wings	
Farm test functionalities in control unit.	
 - Work In Progress:**

Name	Scope.Name	Status.Nan
Large Farm optimization functions for gusty wind sites	Windmill	In Progress
Powergrid fast recovery	Windmill	In Progress
High wind alert sms alerting for small land series	Windmill	In Progress
 - Done:**

Name	Scope.Name	Status.Name
MB proto1 versio	Windmill	Done
Boot Loader setup	Windmill	Done
reboot SW	Windmill	Done
 - Visuals:**
 - V1 Road Map:** A Gantt chart showing tasks from May to Nov, including "Control eq/Today", "E-01001 Nozzle", "E-01048 Electronic System", "E-01005 rotor", "E-01049 Software Platform", "E-01051 Safety Procedures", and "E-01052 Brake Controls".
 - Planned Roadmap View:** A roadmap for 2018 (Oct, Nov, Dec) with lanes for "Embedded", "Mechanics", and "New Lane". Tasks include "Software Controller", "Lift", and "windmill". A "Marker 1" is present at the bottom.

Other content
Combined
within
Page eg. V1
Published
Roadmad
Or
Confluence
Visual Macros

Example: Epic Documentation with Development Details

Confluence Spaces People Create

Pages / Demo HomeBase / Product Windmill Elevator requirements

Epic Page: New Simple Base

Created by Lasse Mikkonen, last modified just a moment ago

For Windmill Operators

who don't like old weak base

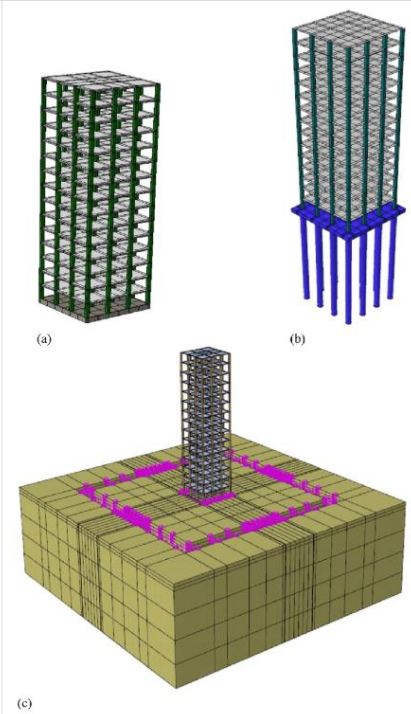
the new base provides support for higher loads

is a operation efficiency gain

that increase output

Unlike Competitors baseless solutions

our solution provides tactical Competitive advantage and way higher utilization rates for Windmill operation.



Target release	19Q1
Epic	E-01093 Simple Base TEST
Document status	IN PROGRESS
Document owner	@Lasse Mikkonen
Designer	@Lasse Mikkonen
Developers	@Pasi Pekkanen

Stories of the Epic

Name	Description	Project	Story Status
Design Base Frame	Make CAD drawings	Windmill	Closed
Collect Stess data	Get Data from Rest API	Windmill	ToDo
Calculate Concrete Amounts	New Base for the market lead	Windmill	In Progress

Live Status



Dynamic List based On query

Example: Confluence Edit View

Confluence Spaces People Create

Paragraph B I U A [color] [font-size] [bulleted list] [numbered list] [checkbox] [link] [table] [insert] [undo] [redo]

Windmill Demo / Pages / Demo HomeBase / Product Windmill Elevator requirements / Epic Page: New Simple Base

Epic Page: New Simple Base

For
Windmill Operators

who
don't like old weak base

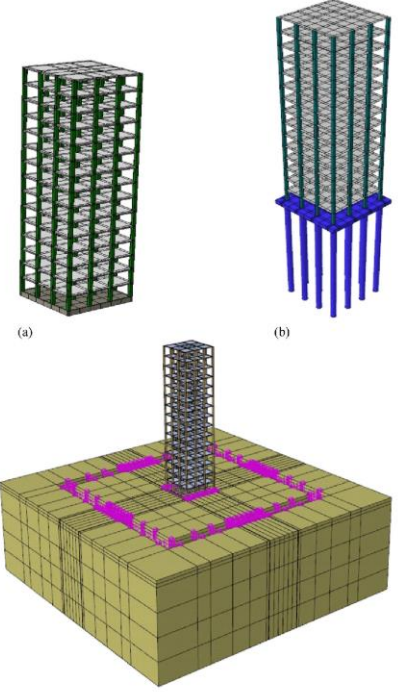
the
new base provides support for higher loads

is a
operation efficiency gain

that
increase output

Unlike
Competitors baseless solutions

our solution
provides tactical Competitive advantage and way higher utilization rates for Windmill operation.



(a) (b) (c)

Page properties

Target release	19Q1
Epic	VersionOne Workitem Link oid = Epic:4845
Document status	IN PROGRESS
Document owner	@Lasse Mikkonen
Designer	@Lasse Mikkonen
Developers	@Pasi Pekkanen

Stories of the Epic

VersionOne Data Table | queryId = 18

Background

Majority of the VersionOne customers are using Atlassian Confluence together with VersionOne.

4/5 customers in Finland at least.

-> there is clear need for integrating V1 information into Confluence pages.

Why so simple Integration?

According to our knowledge very simple integration can solve most of the needs. As an example Atlassian Confluence and JIRA integration is plain query listing of filtered Work Item content to a Confluence Page Macro (Web Gadget). This is all Atlassian has built to integrate their main products. Customer base with dozens of thousands servers is happy with that.



Contribyte

Contribbyte

www.contribbyte.fi

